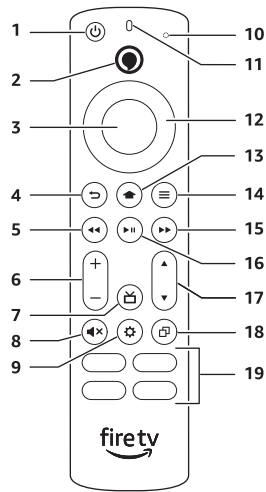
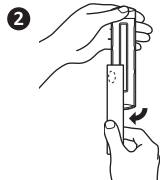
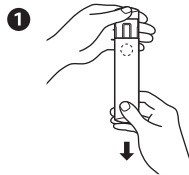


Get to know your Fire TV Alexa Voice Remote



1. Power on/off
2. Alexa voice button
3. Select
4. Back
5. Rewind
6. Volume
7. Guide button
8. Mute
9. Settings
10. LED indicator
11. Microphone
12. Navigation
13. Home
14. Menu
15. Fast forward
16. Play/pause
17. Channel
18. Recents
19. App buttons



Set up your Fire TV Alexa Voice Remote

Insert included AAA batteries

Remove the battery door and insert the batteries into your Alexa Voice Remote.

Pair the remote with your Fire TV

You must pair your new remote to your Fire TV. Choose the option below that fits your situation.

If this is a replacement remote and you don't have the original remote that came with your Fire TV:

1. Restart your Fire TV by unplugging the cord from the power outlet, then plugging it back in. Once the Home screen for your Fire TV appears, your remote should be ready for use. If not, move to Step 2.
2. Press and hold the Home button on the new remote for at least 10 seconds. The LED on the remote will slowly flash amber. Continue holding down the Home button until the LED starts to rapidly flash. A notification will appear on your screen indicating that your remote is successfully paired.

If you do have the remote that came with your Fire TV, you'll need both remotes for setup:

1. On your new remote, press and hold the Home button for 10 seconds. The indicator LED will slowly flash amber for 10 seconds, then flash faster when your remote is ready to connect.

Use your original remote for the following steps:

2. Press the Home button, navigate to Settings at the top of the screen, then select Controllers & Bluetooth Devices > Alexa Voice Remote > Add New Remote.
3. Your Fire TV will search for remotes it can connect with, then display them in a list.
4. Using your original remote, select the new remote from the list. You'll see an on-screen message when it has been successfully paired. You can now use your new Fire TV Alexa Voice Remote.

Troubleshooting tips

- If the new remote does not connect, remove and reinsert its batteries.
- If your remote isn't discovered, press and hold the Home button for at least 10 seconds until the LED rapidly flashes amber.
- Always replace dead batteries with new 1.5V alkaline or 1.2V NiMH rechargeable batteries.